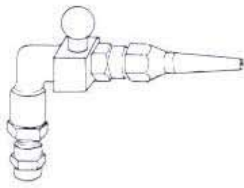
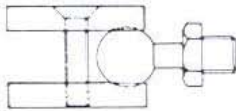


COMPONENTS

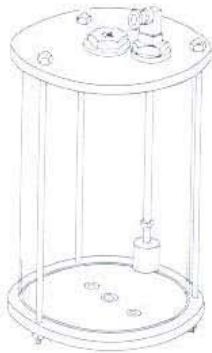


Snozzle with a retaining embody valve " DG008" NOT REGULABLE must be placed and orientated to the point that must be lubricated.

Nozzles are already connected with electrical pump.
Length of pipe: 600 mm.

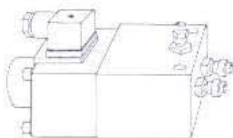


Hinge to orientate the nozzle



Tank (type: DE-3/DE/5 – Ø 208 x 175/260 kg 2,500) with electric level drill.

The tank must be placed onto electrical pumps - lubricant is gravity -fed – Before the connection, service pipe, **MUST** be completely overfilled of lubricant.



Electric pump "DP" 220v. cc

Processing with n. 2 uses

Processing with n. 3 uses

Processing with n. 4 uses

Each electric pump is equipped with nozzles already connected

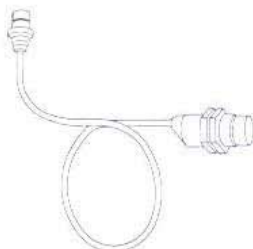


Control board "DR" – is outfitted with connections – switch – pilot light "on" - pilot light "out of lubricant".

L= 253 A= 200 P =98 kg. 1,400

ABSOLUTELY DON'T' OPEN CONTROL BOARD

it is fixed with stirrups.



Detector "Namur", Ø 18 must be located at the distance of mm 5 from the dowel that, at its passage, will give the insertion to immediate functioning of electric pump.